

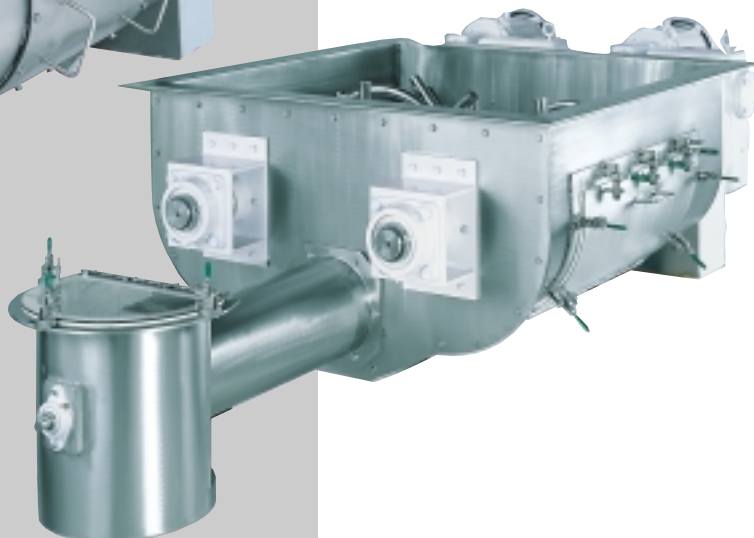
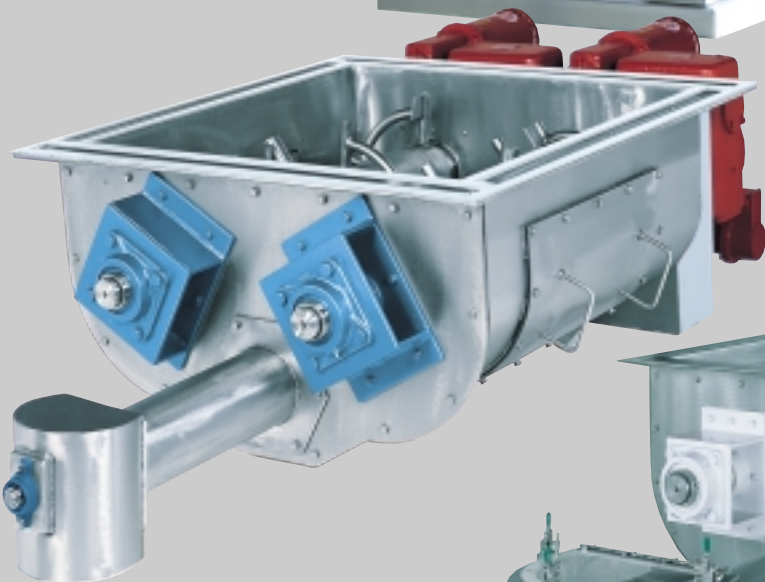
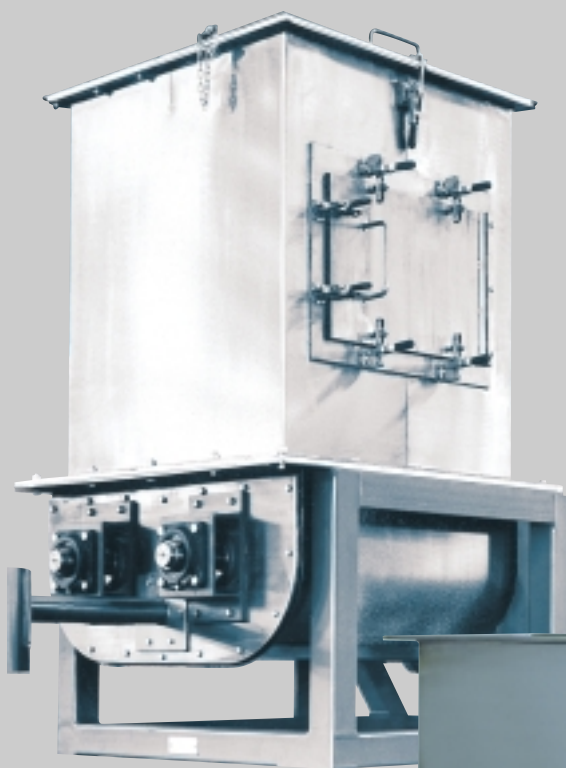


acrison[®]
international

Volumetric Feeders For Dry Solids

Bin Discharger Feeders
Model BDF

World class dry solids
volumetric feeders
featuring Acrison's
triple auger metering
mechanism



Models BDF Series Volumetric Dry Solids Feeders

Multiple auger feeders designed to produce positive flow and feeding of even the most difficult handling dry solid ingredients.

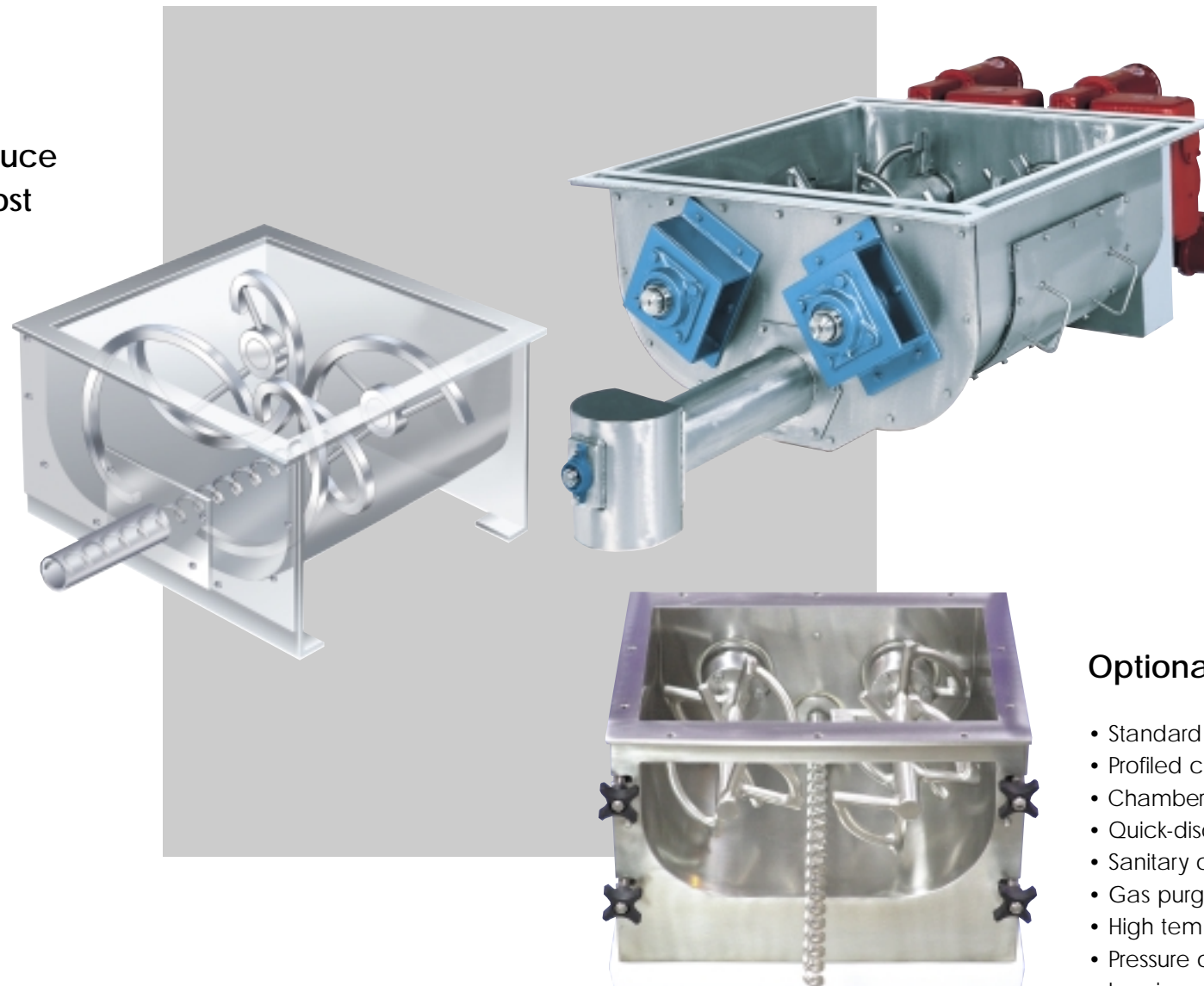
Model BDF Dry Solids Volumetric Feeders combine Acrison's extremely versatile multiple auger bin discharging mechanism with an integral metering auger, to produce positive flow-inducing internal agitation whilst simultaneously metering the product with a high degree of precision and reliability.

Many volumetric feeders utilise a single or twin auger located at the bottom of a converging trough, across which amorphous products easily and often bridge, regardless whether or not the trough is vibrated or agitated. However, the unique design of Acrison's Bin Discharger Feeder totally eliminates any type of convergence that could prove detrimental to product flow and feed. Opposed multiple bin auger action plus substantially increased gravity flow into the feed chamber combine to ensure a smooth, gentle and unrestricted movement of even the most difficult handling materials. Stagnant areas are eliminated by the design and rotation of the two large bin augers, which continuously move product inward and into the metering auger.

Acrison Bin Discharger Feeders can also be designed to 'self-empty', thereby minimising product residue.

Models BDF-00, BDF-11 and BDF-22 utilise a single DC gearmotor drive, the bin augers and the metering auger are mechanically geared together, with the bin augers operating at a much slower speed than the smaller metering auger. The larger model BDF units are fitted with individual motors to all three augers.

Metering accuracies generally range between +/- 1 to 2 percent or better (error) for the majority of products. Accuracy is based on a given number of consecutive one minute samples.



Standard Features

- Large inlet area eliminates bridging potential
- Twin bin augers promote positive product flow within the chamber and the hopper outlet
- Inter auger action ensures consistent metering auger filling
- Modular construction for easy component change
- All steel construction
- Bin augers, discharge cylinder, drive shafts and seal housings are 304 stainless steel.
- Metering auger is 316 stainless steel
- Dust-tight, heavy-duty construction
- Less than 25 dbA when empty

Optional or Accessory Equipment

- Standard hoppers constructed of mild or stainless steel.
- Profiled chamber bottom for minimal product residue
- Chamber access doors for inspection, maintenance and or cleaning
- Quick-disconnect construction for ease of cleanout
- Sanitary construction to satisfy USDA and FDA codes
- Gas purged shaft seals
- High temperature construction
- Pressure construction
- Loss in weight configuration
- Extended length metering auger

Some options may not be available on all models

Model Summary

Model Ref	BDF-00	BDF-11	BDF-22	BDF-33	BDF-44	BDF-55	BDF-66	BDF-77
Inlet mm	200x190	340x290	535x440	635x625	760x750	915x900	1200x1200	1525x1525
Bin Auger dia. mm	95	150	250	250	300	380	460	510
Bin Auger Motors AC kW	[Single Motor]	[Single Motor]	[Single Motor]	0.25	0.37	0.55	1.5	2.2
Auger Motor DC kW	0.18	0.37	0.75	0.75	1.5	2.2	3.75	7.5
Approx. kgs	60	140	250	410	635	1250	1550	1900
Feed Range l/h	0.1-190	1-610	120-2050	980-4730	1500-5400	2000-17000	4700-34000	17000-190000

Due to continuous product development, specifications may be subject to change. See data sheet for further technical information.

Acrison – visibly different, measurably better

Test Centre

We operate a fully equipped test facility at our Manchester, UK headquarters. Customers are encouraged to witness trials on their products, not only at full production rates but also over extended periods, to allow a comprehensive evaluation of feeder performance.



More Support

Should you have an application for which you believe our metering feeders would be suited then please do not hesitate to give us a call or visit our web site at www.acrisonint.net We would be delighted to have the opportunity to tell you more.

Customer Satisfaction

This is our primary aim through offering the very best in solids metering equipment. As testament to this, today thousands of our feeders are giving accurate and reliable performance world-wide. Their performance and dependability is unrivalled, making life easier for those who depend on us and enhancing the quality of their product too.



Delfweg 18, NL-2211 VM Noordwijkerhout-Holland
 Tel.: +31 (0)252 375068 - Email: info@tbma.com
 Tel.: +32 (0)9 236 64 69 - Email: info@tbma.be
www.tbma.com

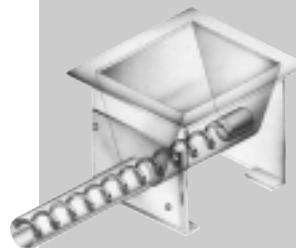
For further information, visit our web site. To discuss an application, give us a call.

Other Volumetric Feeders



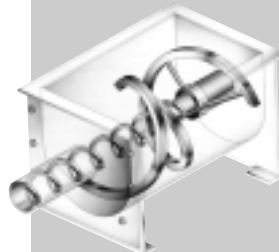
Series 170

The unique chamber configuration is the basis of ultra-hygienic, self-emptying 'Flavour Applicators' specifically for food industry applications and self emptying 'RapiChange' feeders for the plastics industry



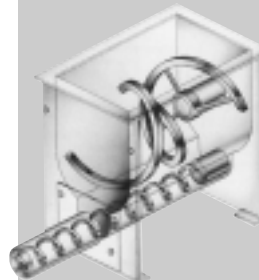
Series 101 and 130

Single metering auger for free flowing granular materials



Series 105 and 140

Double concentric augers to accommodate a wide variety of materials



Series 1015

Dual augers for medium free flowing materials and minimal product residue

Other Acrison Products...

- Models V101 and V130 Fibreglass Feeders
- Model W105 Volumetric Feeder Series
- Model 200 Series of Weigh Belt Feeders
- Model 203B Series of Weigh Auger Feeders
- Models 401, 402 and 404, 405 and 406 ("Weight-Loss-Differential") Weigh Feeders
- Model 403 Series ("Weight-Loss-Differential") Weigh Feeders
- Model 403B (D) Batch/Dump Weighing Systems
- Model 404BZ (BU) Bulk Bag Unloader Batch Weigher
- Models 350 and 301 Continuous Blenders and Blending Systems
- Multiple Auger Bin Dischargers and Multiple Auger Bin Discharger Hoppering Systems
- Vibratory Bin Dischargers
- Model 500 Series of Polyelectrolyte Metering and Wetting Systems
- Water and Waste Water Treatment Systems
- Volumetric and Gravimetric Feeder Controllers and Control Systems
- Model 270 In-line Weigh Feeder