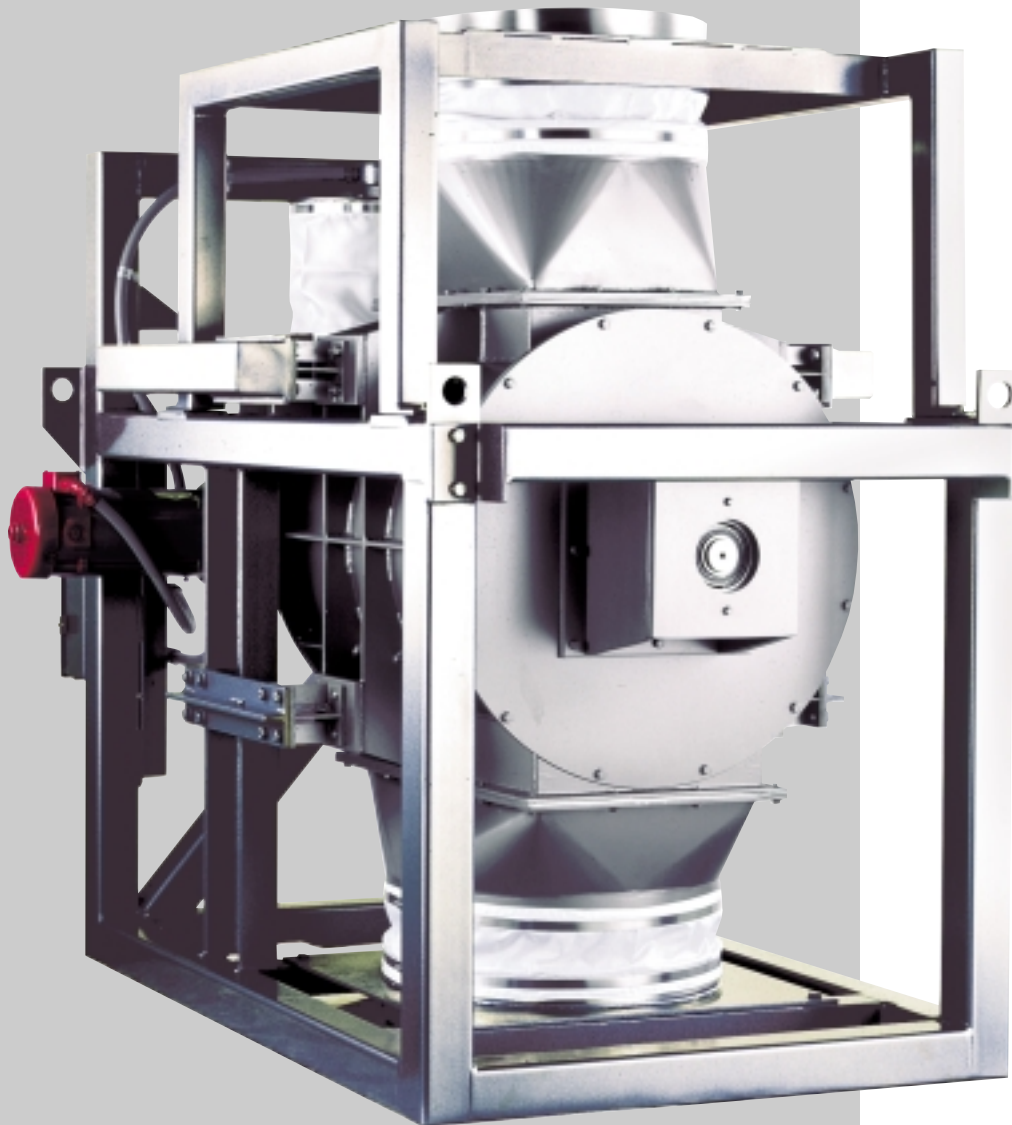




acrison[®]
international



'In-Line' Weigh Feeder

Model 270

High Performance, High Capacity Continuous Weigh Feeding of Bulk Materials

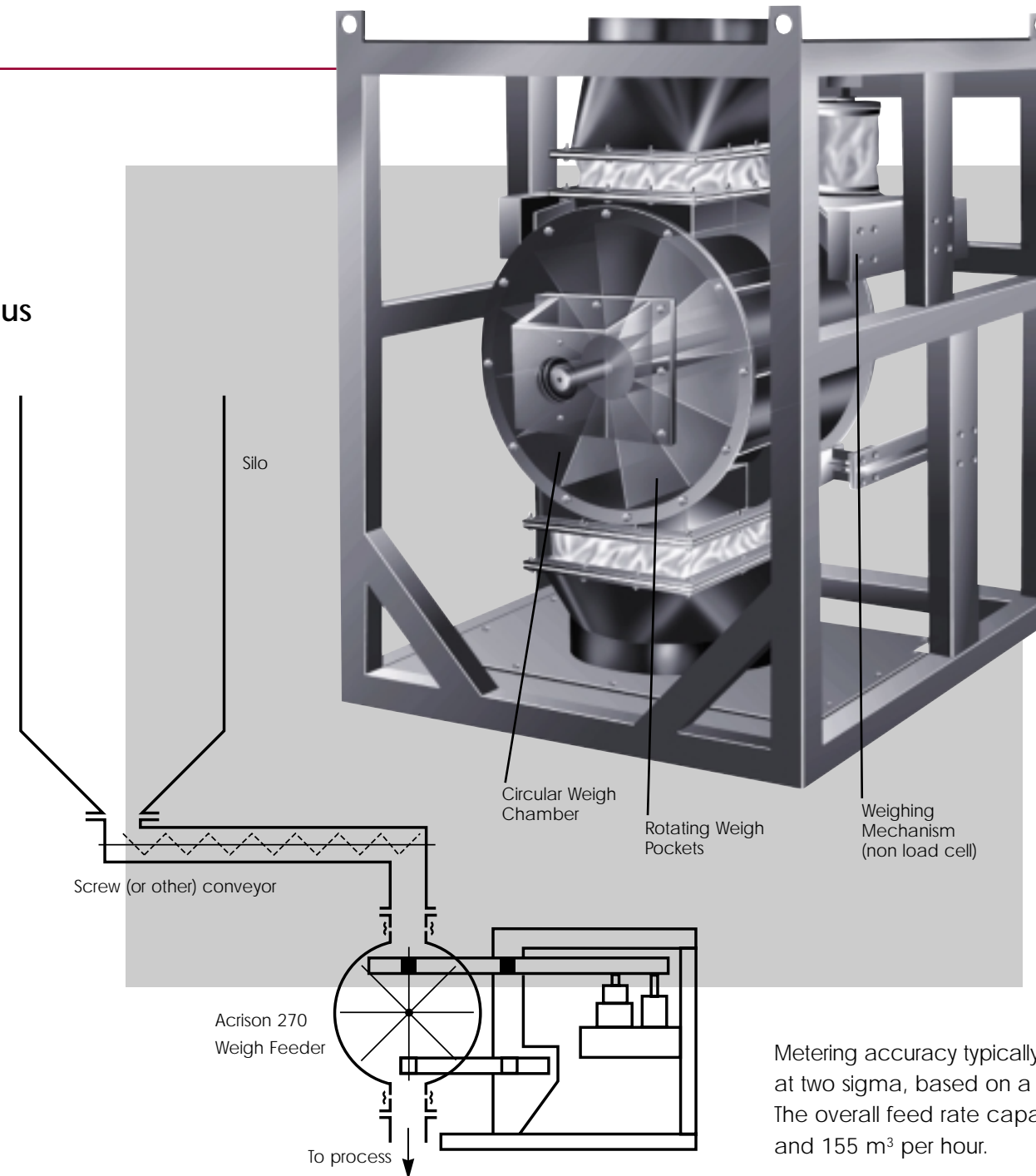
Model 270 'In-Line' Weigh Feeder

High Performance High Capacity Continuous Weigh Feeding

Representing an entirely new concept for continuous weigh feeding, the Model 270 Weigh Feeder has been specifically designed to accurately and reliably meter a wide variety of generally free-flowing dry solid materials, in a vertical 'in-line' configuration, at moderate to high feed rates.

Specialised requirements in several industries demand weigh feeder performance for precision metering, registering or monitoring of high capacity flow rates. The compact 270 series has been designed to suit these needs. The small footprint and minimal height requirements make installation easy. As an in-line weigh feeder, the product supply to the unit is continuous, thus avoiding very high instantaneous refill rates. The unit has only one moving part, its pocketed metering rotor that continuously weighs and discharges dry solid materials in a completely dust-tight assembly.

A circular weigh chamber, housing the rotor assembly is mounted within an ultra high resolution Acrison weighing system. A separate variable speed metering device, attached directly to the product supply, feeds product into the top inlet of the weigh chamber within which the slowly rotating synchronous speed rotor weighs and then discharges the material.



Standard Features

- Continuous weigh feeding using dynamic scale, not an inferential device
- Ultra high resolution, mechanically counterbalanced non load cell scale
- Only one moving part
- Low power consumption
- Virtually no maintenance
- Very low noise in operation
- Low speed unit minimising product degradation
- Product contact parts constructed of 304 stainless steel
- Small footprint and minimal height
- Rugged and simple design utilising field proven technology
- Maximum product temperature 115 °C

Options

- Construction to Eex-d-IB-T4
- High temperature version

Metering accuracy typically ranges between +/- 0.25 and 1 percent or better (error) at two sigma, based on a given number of consecutive one minute weighments. The overall feed rate capability of Model 270 Weigh Feeders ranges between 10 and 155 m³ per hour.



The Model 270 utilises Acrison's counterbalanced weighing system equipped with the Ratiometric Digital Weight Resolver for superior weight sensing and reliable long-term operation. This unique non load cell based system generates a pure unamplified scale signal of 20 bits, which is only used for the product, ensuring the highest possible scale accuracy.

Model Summary

Model Ref	270-0	270-1	270-2	270-3
Inlet Diameter OD mm	170	275	325	510
Outlet Diameter OD mm	170	275	325	510
Rotor Diameter mm	250	355	460	610
Motor kW	0.25	0.37	0.55	0.75
Max Feed Rate m ³ /hr	10	30	68	155
Height mm	1100	1200	1300	1525
Footprint mm	1000 x 600	1300 x 900	1300 x 980	1540 x 1160
Approx Weight kgs	400	550	680	840

Due to continuous product development, specifications may be subject to change. See data sheet for further technical information.

Acrison – visibly different, measurably better

Test Centre

We operate a fully equipped test facility at our Manchester, UK headquarters. Customers are encouraged to witness trials on their products, not only at full production rates but also over extended periods, to allow a comprehensive evaluation of feeder performance.



More Support

Should you have an application for which you believe our metering feeders would be suited then please do not hesitate to give us a call or visit our web site at www.acrisonint.net We would be delighted to have the opportunity to tell you more.

Customer Satisfaction

This is our primary aim through offering the very best in solids metering equipment. As testament to this, today thousands of our feeders are giving accurate and reliable performance world-wide. Their performance and dependability is unrivalled, making life easier for those who depend on us and enhancing the quality of their product too.



Delfweg 18, NL-2211 VM Noordwijkerhout-Holland
Tel.: +31 (0)252 375068 - Email: info@tbma.com
Tel.: +32 (0)9 236 64 69 - Email: info@tbma.be
www.tbma.com

For further information, visit our web site.
To discuss an application, give us a call.

Over the last 30 years many companies have discovered the benefits of Acrison equipment, providing them with competitive advantage through consistent high performance metering, long term reliability and short term accuracy.

Companies of all sizes and types all over the globe have discovered the Acrison difference. From the production of base resins, high performance engineered plastics, aerosol valves and toilet seats, breakfast cereals through to rocket fuels, thousands of Acrison feeders are in daily use in hundreds of production plants throughout the world with complete reliability.

Take up the Acrison challenge and see the performance improvements delivered by the Acrison range of precision feeding equipment.

**Acrison – visibly different,
measurably better**